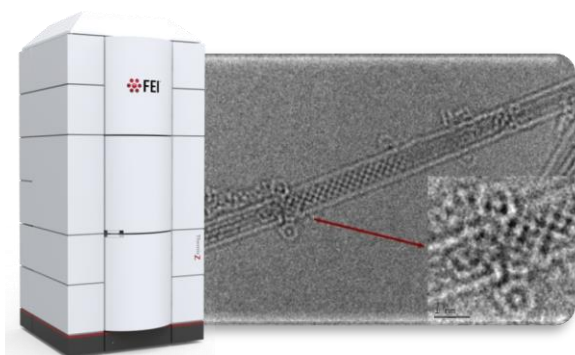


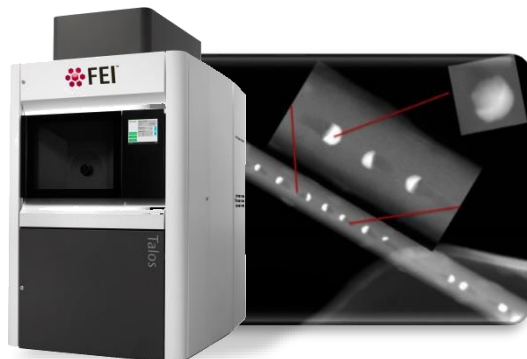
Change Your World With ThermoScientific Electron Microscope Solutions

Themis Z™ TEM



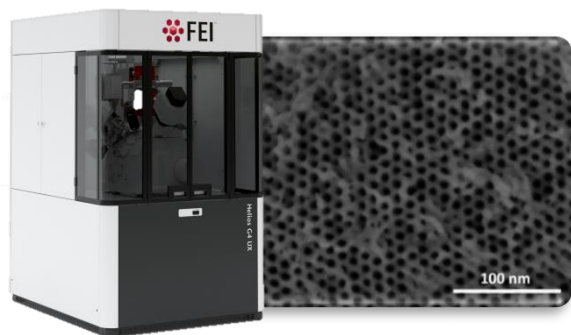
- The Ultimate in optical performance, reproducibility and flexibility
- Low damage, high sensitivity imaging and analysis of materials in 2D, 3D and 4D
- Best atomic characterization
- Best environmental stability and in situ dynamic research
- Widest range of materials science research covered in one tool

Talos F200™ TEM



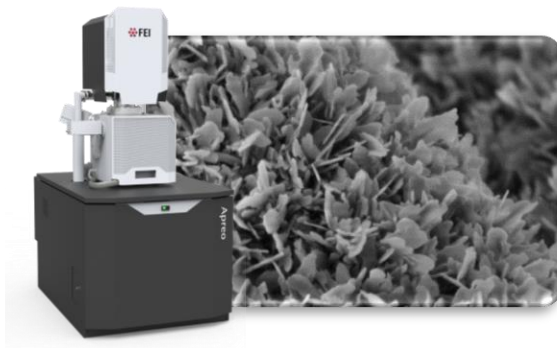
- High resolution and high throughput STEM imaging
- Fast, precise and quantitative 3D EDS analysis
- Dynamic and high resolution TEM imaging with fast navigation
- Remote control with environmental immunity

Helios G4™ DualBeam



- Fastest and easiest preparation of highest quality samples for HR S/TEM and APT
- Extreme high resolution imaging with the most precise contrast
- Access highest resolution, multi-scale and multi-modal subsurface and 3D information
- Fast, accurate, and precise milling and deposition of complex structures with critical dimensions of less than 10nm

Apreo™ SEM



- Unique compound final lens delivers an exceptional resolution of 0.8nm at 1kV
- Best resolution on tilted or topographic samples
- Best performance on sensitive, insulating sample
- The widest range of charge mitigation strategies
- Easiest sample handling and navigation